

CIDR CATTLE INSERT

Follow these simple steps:

1. The CIDR product: 1.) Insert 2.) Applicator and 3.) Ciderol for injection



2. Fit the body of the insert into the applicator with the tail piece along the slot. The two wings will be pushed together, protruding about 2cm above the top of the applicator .



3. The insert must be immersed in Acriflavine in Glycerine 1:1000 to prevent vaginitis and also to lubricate the CIDR.

4. Move the animal's tail to one side and clean the vulva with a paper towel.

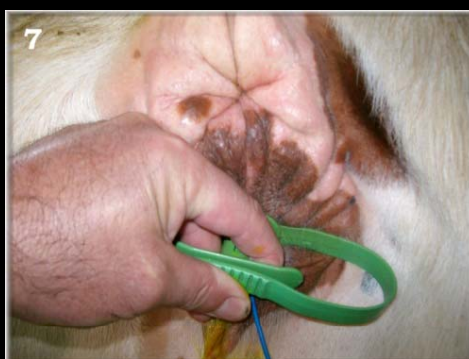
5. While lifting the top part of the vulva, open the lips.



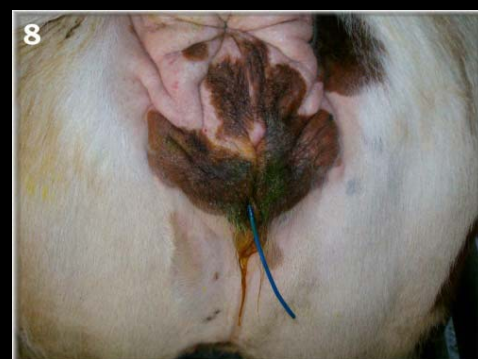
6. With the tail of the insert curling down, introduce the insert gently into the vagina until it meets resistance.



7. Depress the plunger of the applicator to deposit the insert, then slowly withdraw the applicator.



8. The inserted CIDR is in the vagina



9. NB: The applicator has to be cleaned and then disinfected in a F10 solution. Use two to three applicators. Rotate and clean applicator after every application in disinfectant .



10. To remove the insert after the specified number of days, simply give the protruding tail piece a gentle but firm pull.

